

RP SERIES ROTATIONAL HEAD PUNCH

BETTER PARTS  BETTER PROFITS

USA
DURMA

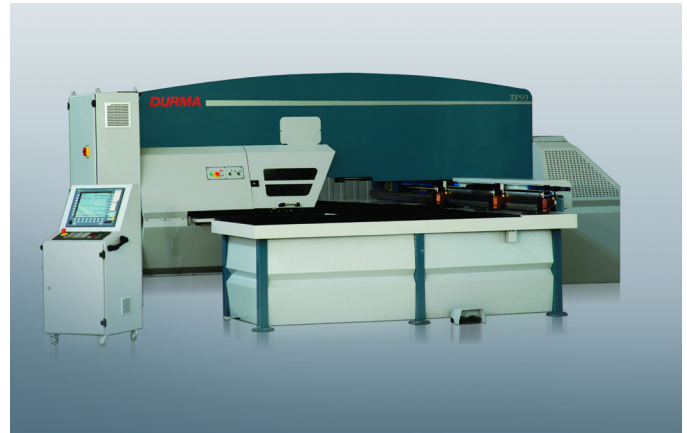
TP SERIES

Standard Equipment

- Siemens 840Dsl CNC Control
- Remote Diagnostic via Ethernet
- Automatic Clamp Positioning
- Alignment Tool
- Oil Cooler
- Brush Table
- Up to Six Indexable Multi-Tool Stations
- Network via Ethernet
- Automatic Tool Lubrication
- USB Port
- Auto Sheet X Axis Repositioning
- Work Chute (RP9)

Optional Equipment

- Load/Unload Systems
- Tool Holders
- Wheel Programming Software
- Indexable Multi-Tool CAD/CAM Nesting Software
- Parts Chute



Capacities

- 49" x 78" x 22/33 Tons
- 49" x 100" x 22/33 Tons
- 60" x 120" x 22/33 Tons

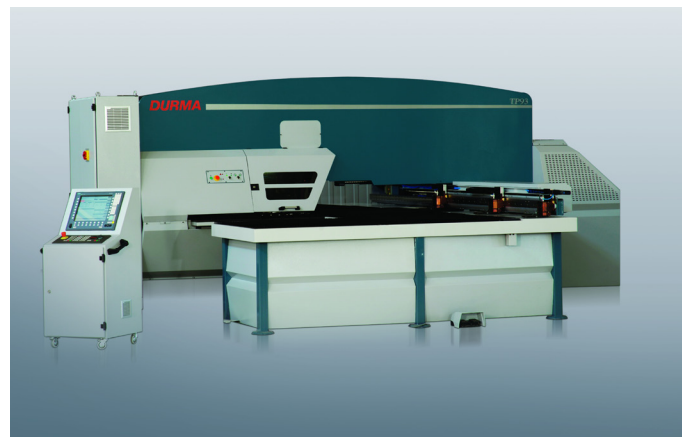
RP SERIES

Standard Equipment

- Siemens 840Dsl CNC Control
- Network via Ethernet
- Automatic Tool Lubrication
- USB Port
- Oil Cooler
- Work Chute (RP9)
- Remote Diagnostic via Ethernet
- Automatic Clamp Positioning (RP9)
- Alignment Tool
- Auto Sheet X Axis Repositioning
- Brush Table

Optional Equipment

- Indexable Multi-Tool CAD/CAM Nesting Software
- Automatic Sheet Clamps (RP6)
- Work Chute (RP6)
- Tool Holders
- Wheel Programming Software



Capacity

- 49" x 78" x 22/33 Tons



STANDARD EQUIPMENT

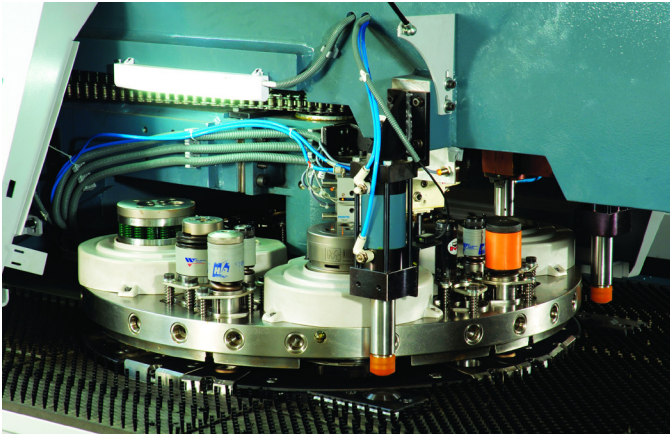
- Siemens 840Dsl CNC Control
- Remote Diagnostic via Ethernet
- Network via Ethernet
- Automatic Clamp Positioning (RP9)
- Automatic Tool Lubrication
- Alignment Tool
- USB Port
- Auto Sheet X Axis Repositioning
- Oil Cooler
- Brush Table
- Work Chute (RP9)

OPTIONAL EQUIPMENT

- Indexable Multi-Tool
- Automatic Sheet Clamps (RP6)
- Work Chute (RP6)
- Tool Holders
- CAD/CAM Nesting Software
- Wheel Programming Software

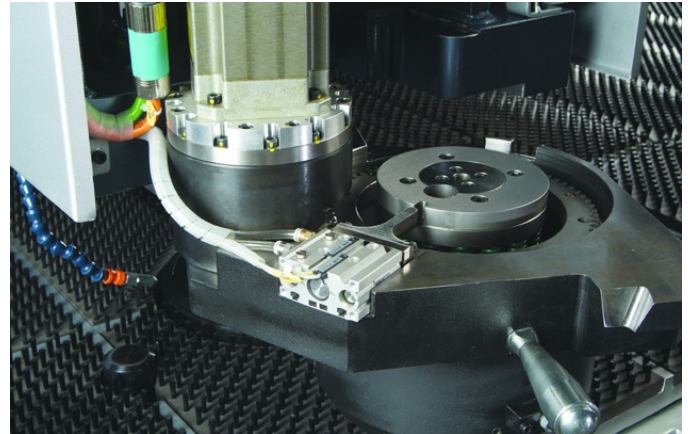
CAPACITIES

- 49" x 78" x 22/33 Tons



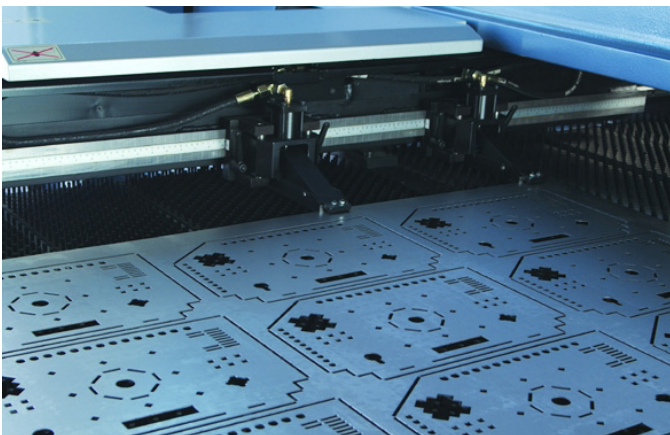
INDEXABLE MULTI-TOOLS

3, 6, 8 and station indexable multi-tools reduce tool changes and increase flexibility. Programmable to .02 degrees with no upper and lower mechanical connections provides perfect alignment of the upper and lower tool. Even defects or worn tools can be offset.



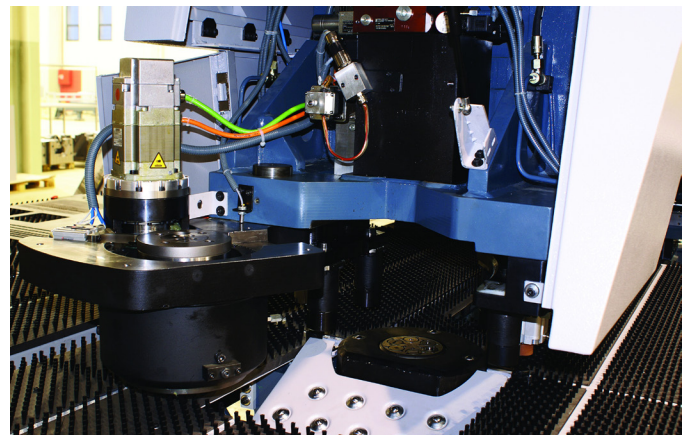
ROTATIONAL HEAD

Full 360 degree programmable head achieved 40 revolution per minute. A harmonic zero backlash gear driven system provide accurate positioning and control.



PROGRAMMABLE SHEET CLAMPS & AUTO SHEET REPOSITIONING

The position of the sheet clamps are automatically set by standard program information (standard on RP9). Contact sensors automatically stop the machine if these sensors detect any movement of the sheet while it is clamped.



PROGRAMMABLE WORK CHUTE

A work chute is programmable allowing the automatic removal of small parts up to 13.7" x 13.7" from the work area. (standard on RP9).

SIEMENS 840 DSI SERIES CONTROL

Durma has chosen the very powerful Siemens 840 Dsl CNC Control, which has been specially designed for punching. Some of the features are:

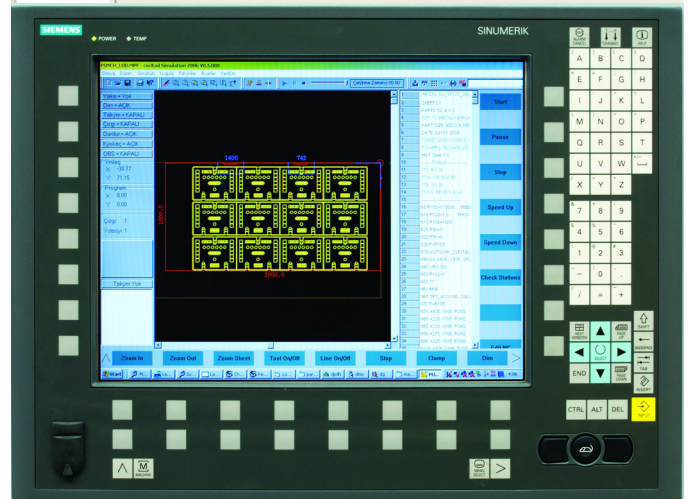
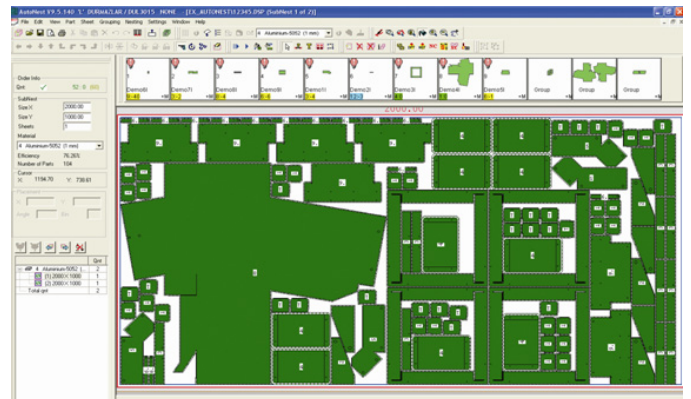
- Movable Control Cabinet
- Ethernet and Network Communication Connections
- UPS Electrical Component Surge Protection System
- Internal Diagnostics w/Graphic Visualization
- Online Help Messages
- Telediagnosics via Modem (optional)
- Automatic Optimization of Sheet Speed According to Sheet Mass
- Graphic Programming @ Machine Control
- Sheet Layout & Automatic Calculation of Sheet Layout
- Removable Software Key (office or machine programming)



CADCAM NESTING SOFTWARE

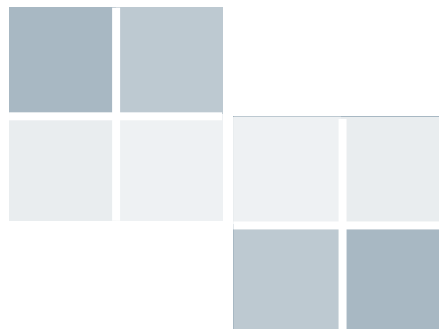
Available as an option to increase productivity. Several features include:

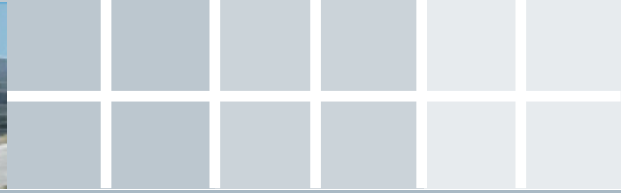
- Automatic Contour Check and Correction
- Automatic Punching
- Supports Wire-Joints and Micro-Joints
- Allows Predefined Shapes Placement
- Full Common Cut Support
- Turret Setup Customization
- Sheet Reposition and Transformation
- Auto-Indexing
- Offers Special Tools Support
- Automatic and Manual Clamp Avoidance





RP Series	Model	RP6	RP9
Maximum Tonnage	U.S. ton	33	22
X Axis Movement	inch	78.7 + R	78.7 + R
Y Axis Movement with Multiple Tool	inch	49.2	49.2
Y Axis Movement with Single Tool	inch	50.6	50.6
Max Cutting Thickness	mm	6	6
Automatic Repositioning Range *	inch	393.7	393.7
Y Axis Speed	ipm	2	3
X Axis Speed	ipm	3	3.8
C Axis Index Speed	rpm	40	40
Lateral Speed Y + X	ipm	3	4.7
Max Hit Rate (1mm pitch, 1mm thickness)	hpm	600	850
Max Hit Rate (25mm pitch, 1mm thickness)	hpm	280	320
Max Hit Rate: Marking	hpm	900	1250
Positioning Accuracy	inch	±.004	±.004
Max Weight of Sheet	lbs	220	265
Working Height	inch	38.7	38.7
Table Size	inch	94.5 x 141.7	94.5 x 141.7
Machine Dimensions	inch	142 x 162 x 97	141 x 162 x 97
Motor	kw	15	10
Oil Tank	lt	50	50
Approx. Weight	lbs	25574	26455
No. of Clamps		2	2
Clamp Holding Force	lbs	1874	2205
Automatic Clamp Positioning		-	Standard





DURMA AIMS FOR CONTINUOUS DEVELOPMENT

DURMA's large investment in machining centers and production equipment, as well as its ISO-certified factories totaling 1,350,000 square feet and 1,000 employees, make one of the world's largest, efficient and most contemporary facilities in the world.

In order to offer customer solutions and further develop patents, the Durma Research and Development center opened in 2010. Fifty engineers were added over the last two years.

Designed and engineered with modern technology, Durma products are equipped with high quality and proven readily available components.

Established in 1956, Durma has vast experience in building and supplying quality products. With over 60,000 machines delivered worldwide, Durma has earned a reputation as a supplier of innovative "value oriented" solutions.

Your partner today, tomorrow, and forever.

